

Bangladesh: SHOUHARDO III

Overview

Added VSLAs to long-term efforts to improve food security and resilience among poor and extremely poor communities in rural Bangladesh.

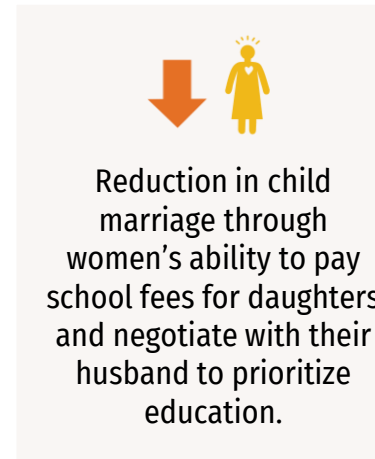
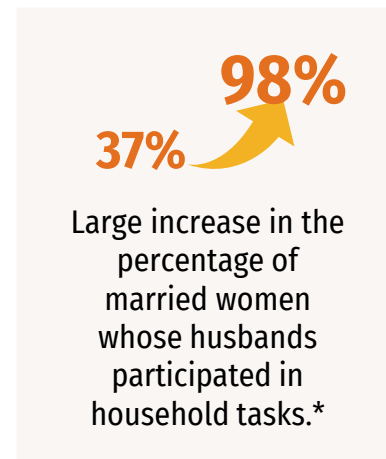
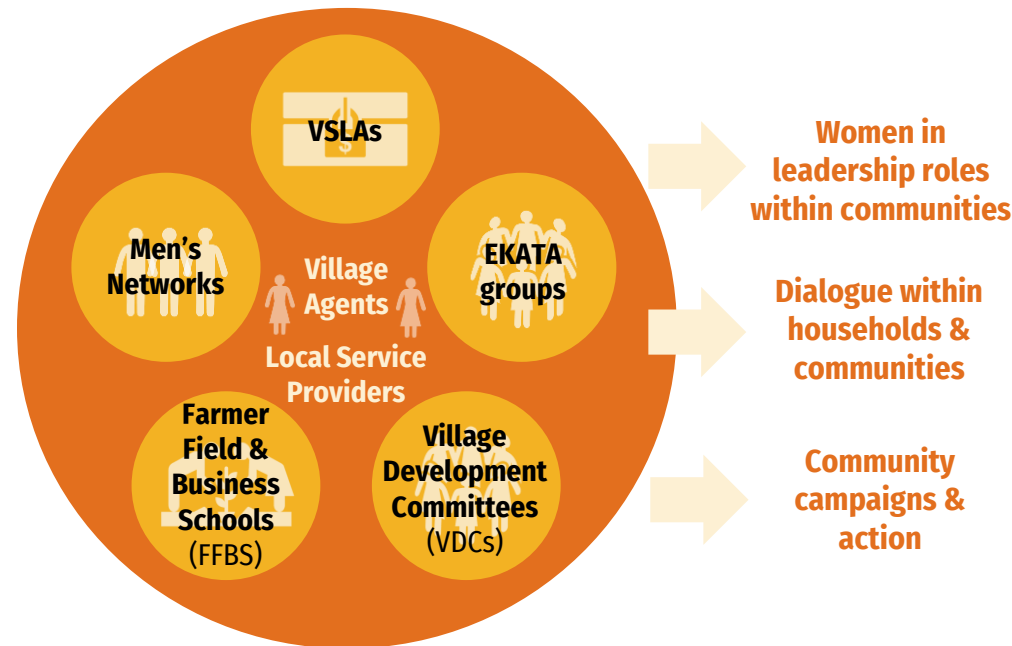
Results

Women have **improved decision-making power** over their own income.

Women have **increased mobility** to participate in income-generation and social activities.

Household **incomes have increased**.

Women are experiencing less **gender-based violence**.



Which aspects contributed to gender transformative impact?

- Activities promoting women as savers and decision-makers **challenge harmful gender norms**.
- Couples' counselling promotes **gender dialogue** at household level, **engaging men** to reflect on the power dynamics of household decision-making.
- Men's network **engages men and boys** within communities.
- EKATA groups build **solidarity and collective action** within communities.
- Community-led action, including story-telling from a male perspective to shift social norms, addresses **gender-based violence**.

Learn more:

<https://shouharDO3plus.carebangladesh.org/>