

Vietnam: ADVANCING WOMEN'S ECONOMIC EMPOWERMENT (AWEEV)

Overview

Worked with VSLA members and their communities in poor rural and ethnic minority areas to increase women's participation in paid economic activities.

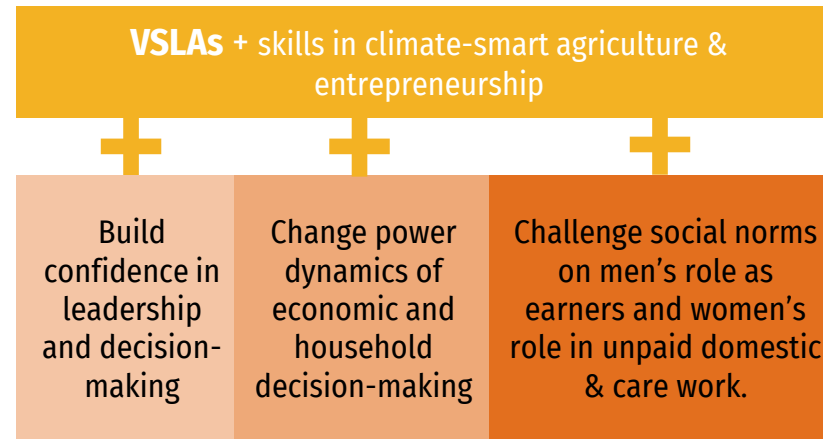
Results

Women have **reduced the time they spend on unpaid domestic and care work.**

Women are making **economic decisions** in their homes.

Women are joining **production groups**, starting their **own businesses**, and **collectively advocating** with power-holders.

Learn more: <https://www.care.org.vn/wp-content/uploads/2022/02/AWEEV-project-brief-EN-VI-220211.pdf>



Which aspects contributed to gender transformative impact?

- Deep **reflection on gender with staff & partners** through Social Analysis & Action (SAA) and extensive training on facilitating gender dialogue.
- **Gender dialogue** at different levels: within couples, between men and women in communities; between women's groups and local authorities.
- **Engaging men** as a network to support women's economic participation and decision making.
- **Social norm change activities** including dialogues and community events initiated by men's network targeting unpaid domestic and care work roles, and equal decision-making within households and communities.
- **Collective action** among VSLA groups