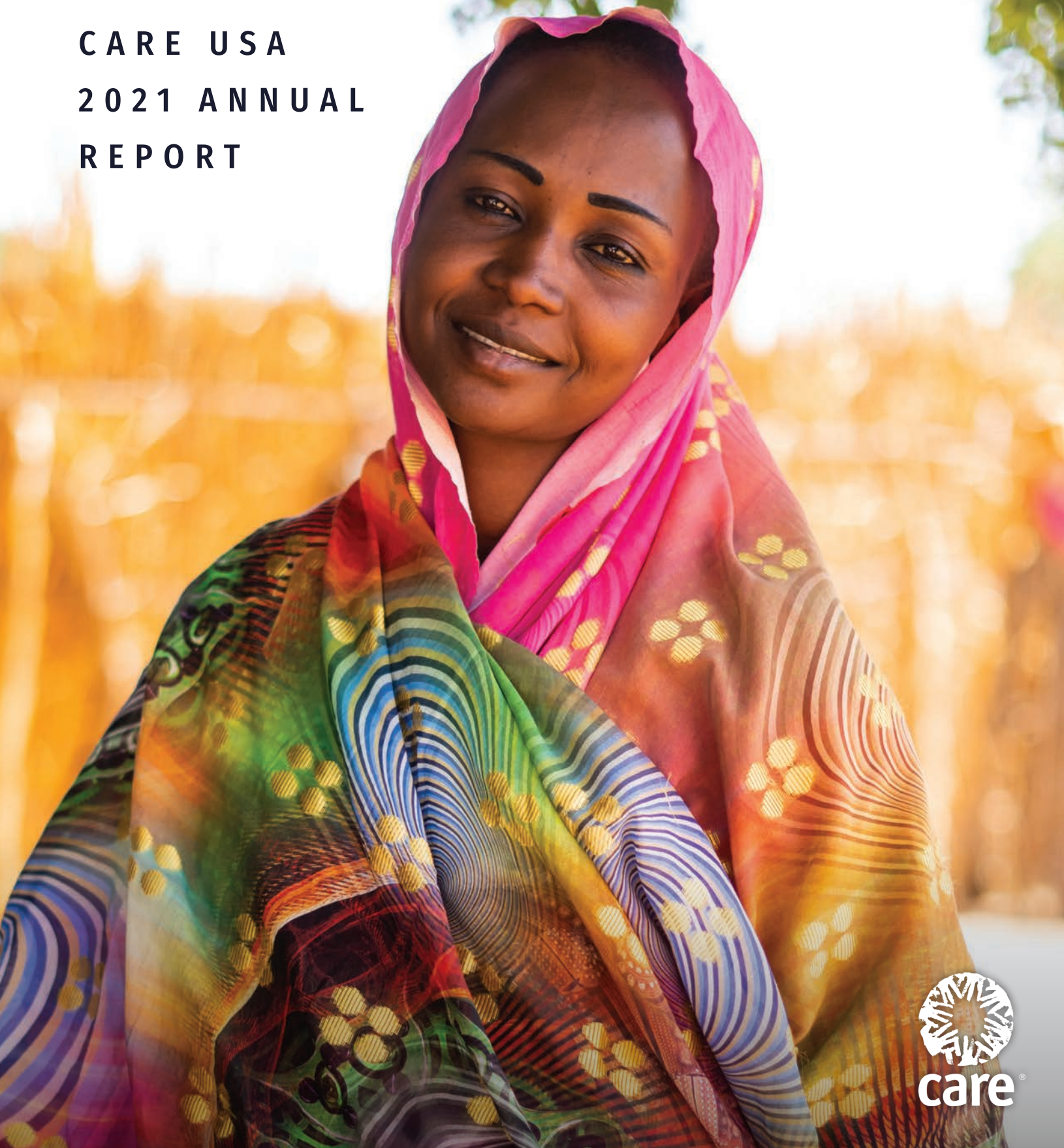

CARE USA
2021 ANNUAL
REPORT



care®

letter from the president and CEO



THE LAST YEAR HAS TESTED AND PROVEN
THE STRENGTH, STAMINA, AND ENDURANCE
OF CARE STAFF, PARTNERS, AND THE PEOPLE
WE SERVE...

The last year has tested and proven the strength, stamina, and endurance of CARE staff, partners, and the people we serve, as a global pandemic stretched into its second full year, worsening crises and ongoing injustices.

Our commitment continued through the CARE Crisis Response Campaign, the largest in our history. With your support, we were able to raise our goal from \$100 million to \$150 million in new funding to save lives and protect the futures of more than 100 million people.

2021 also marked the culmination of our 75th year as an organization, as President Joe Biden and former Presidents Barack Obama, George W. Bush, Bill Clinton, and Jimmy Carter joined our virtual anniversary celebration in May.

Shortly after that event, India's COVID outbreak demanded immediate mobilization. Your support enabled us to reach more than 10 million people in India directly with treatment, vaccines, and preventative care, and to facilitate another 50.9 million vaccine doses via partners.

This year also marked the start of our two-year Fast and Fair initiative, which aimed to provide vaccine delivery to at least 100 million vulnerable people. We were able to exceed our goal in just one year, prioritizing frontline caregivers in 69 countries, and will continue to support equitable vaccine delivery through 2022.

We are responding to COVID's downstream impacts: the enormous regressions around poverty and hunger. CARE has provided clean water to 4.9 million people, hygiene kits to 4.8 million people, and nutritious food for 4.3 million people who face the threat of

malnutrition due to lockdowns or loss of income. With 24 million children projected to drop out of school permanently, CARE has also expanded an innovative accelerated learning program for out-of-school adolescents to gain relevant skills.

Throughout the year, CARE has responded to the crises that were most urgent. Sudden instability in Afghanistan and a 7.2-magnitude earthquake in Haiti created difficult challenges, but you enabled us to respond meaningfully. In both countries, we were able to draw upon long histories of community trust, engagement, and impact.

That history is what informs and fuels our 2030 Vision, which calls for CARE and our partners to impact 200 million people living in poverty. The world is facing daunting challenges and strong headwinds, including climate change, conflict, and COVID. In response, we are leaning into more innovation, private sector partners, and bold advocacy to increase our reach.

Building on our strengths in gender-equal approaches, local leadership, and global scale, we also aspire to deliver COVID vaccines and additional humanitarian and development support to hundreds of millions more people. Thank you for being part of our impact journey as we join with you to seek a more equitable future for all.

On behalf of everyone at CARE, I thank you for your trust, partnership, and ongoing commitment.

Michelle Nunn



Michelle Nunn
President and CEO

featured program

Village Savings and Loan Associations

In 1991 no one yet knew that a grassroots experiment in Niger, building on the ancient practice of group savings, would go on to change large parts of the world. Pioneered in West Africa, VSLAs are distinct from institutional microfinance because they evolve based on member needs and aspirations.

Over the past 30 years, VSLAs have grown from a means of savings to a building block of communities. Groups enable members to achieve goals that may have nothing directly to do with economic outcomes. That's why women stay with these groups for a lifetime — often over the course of generations. VSLAs are not just a financial service; they're a platform for change.

- Children stay in school longer and get more nutritious food.
- Adolescent girls delay marriage and gain confidence and financial literacy skills.
- Adult women and mothers gain household influence as earners, investing in their children's education and their own enterprises.

- Older women, often widowed, have a network they can turn to for support while building a safety net for unexpected expenses or healthcare.

VSLAs have reached 10 million people in 59 countries and are a powerful, endlessly reproduceable engine of community development and gender equality. Members and partner organizations have taken CARE's approach and replicated it, reaching millions more people. This model has "gone viral" because it not only opens access to money, but also supports critical needs, positively affecting livelihoods, health, education, and empowerment.

Savings groups have also provided resilience during COVID-19. New data reveals that VSLA members are half as likely to report challenges earning an income or providing food or healthcare compared with women who were not part of these groups. The strength provided by a VSLA benefits more than just members, as many groups mobilized to support entire communities when COVID hit.

CARE is working with other organizations, government partners, and group members to scale the reach of VSLAs to 62 million people by 2030.

WHAT IS A VSLA?

Self-managed group of about 15-25 individuals

Primarily poor women in rural areas

Save money, access small loans, obtain emergency insurance

2021 CARE by the numbers

CARE REACHED

1,495 PROJECTS > 102 COUNTRIES > 100M PEOPLE

3M

people to support climate justice and address the effects of climate change.

3M

people to support women's economic justice.

14M

people to advance gender equality.

24M

people in humanitarian crisis to help meet their basic needs.

34M

people to provide access to food, water, and nutrition.

48M

people to provide access to health services, including the right to sexual and reproductive health.

26%

of projects created a new solution to a problem.

85%

of projects integrated gender into their work.

36%

of projects included moderate or intensive advocacy.

 **FOOD & WATER**

Fighting malnutrition one village at a time

Souadé Aboubacar, a mother of nine, lives in rural Niger and participates in Hamzari, a five-year, \$33 million CARE program (in partnership with USAID) that addresses food insecurity and malnutrition.

Souadé is part of a “care group” with 10 women, sharing new ideas about child nutrition and health.

“Before Hamzari we did not know about enriched porridge and bean puree,” she says. “We noticed that by eating this porridge and bean puree our children are in good health and grow normally, without diarrhea or signs of malnutrition.”

“Today, we practice market gardening, a new activity in our village. We produce vegetables for salad that we can prepare and eat with our children. Thanks to Hamzari, we also produce cabbages, tomatoes, and other foods.”

 **CRISIS RESPONSE**

Rebuilding in Haiti

Natacha is one of thousands of Haitians who lost their homes and their businesses in the 7.2-magnitude earthquake that struck Haiti on August 14.

Her small store was looted by people looking for food in the quake’s aftermath, and she’s not sure how to restart. The construction business her husband worked in was destroyed, too. “I need to restart my activities, my work,” she says. “I don’t like to sit around.”

Natacha and her husband are exactly the people who can help rebuild Haiti. She sells food, he works in a cement business — both local businesses that will be critically needed not just now, but in the weeks, months, and years to come.

As CARE focuses on those immediate needs, we’re keeping the big picture in mind. CARE has supported more than 119,000 people since the earthquake — mostly with water, hygiene supplies, and information — and will continue to help the people of Haiti, like Natacha, build back stronger.



**WITHOUT WOMEN,
THERE WILL BE
NO SOLUTIONS.**

 **CLIMATE**

Advocacy and Adaptation

Raquel Vásquez leads the grassroots women’s organization *Madre Tierra* in Guatemala.

Over the past 24 years, the organization has been a place for Raquel to interact with local groups and local and national authorities and to advocate for women’s empowerment.

CARE’s Partners for Resilience program helps farming communities like Raquel’s adapt to climate change and drought. Training in irrigation methods and the use of more drought-resistant seeds has changed the course of her group. Its members also have become more outspoken about their role in preserving their environment. **For Raquel, one thing is clear: Without women, there will be no solutions.**

GUATEMALA

stories of impact



MALAWI



EDUCATION & WORK

Empowering education and agriculture through VSLAs

Litness Nyirongo, 16, is the oldest child from a rural family in Malawi. Before her parents joined a Village Savings and Loan Association (VSLA), life was a struggle. Her family couldn't afford to send her or her siblings to school and were living under a grass roof.

Since joining the VSLA, Litness' parents have been able to save money, so they can send their children to school. They have built a house with a metal roof and improved their crop and livestock production. Litness proudly adds: "School fees are no longer a challenge, and we have a great harvest yield by the end of the year."

Through the VSLA, Litness' parents also attend household counseling sessions, to improve relations between men and women, foster equal decision-making, and increase women's financial independence.

"School fees are no longer a challenge, and we have a great harvest yield by the end of the year."



HEALTH

A rapid response to COVID-19 in India

What does it look like to respond to the world's worst COVID outbreak?

It looks like 2,000 beds in 14 treatment facilities across the country to support existing cases and prepare for future surges.

CARE has been on the front lines of the COVID response in India, aligning our work with governments to address the outbreak. Additional resources included supplies of desperately needed oxygen, medical equipment and personnel, and personal protective equipment.

The longer-term work includes greater vaccine access through new health centers and community outreach and education to stop the spread.



EQUALITY

Challenging traditional attitudes, improving communities

Agnes and Isingoma are a married couple in western Uganda whose troubled relationship has had a radical transformation that has benefited them and their community.

Agnes is a nurse, but her husband never allowed her to take a job or earn her own paycheck — instead, she ran a small clinic from home.

Through a partnership with The PepsiCo Foundation called She Feeds the World, Agnes went through women's leadership training and eventually gained the confidence to run for local political office in January — and she won. Meanwhile, Isingoma had his thinking challenged by a community-based mentoring program, and today he is his wife's biggest supporter.

In too much of the world, the talents of women and girls are overlooked. We all benefit when they are free to use their gifts and abilities to the fullest.

2021 Global Reach

Latin America and Caribbean

- 900,000 people
- 137 projects
- 13 countries

West Africa

- 6M people
- 197 projects
- 14 countries

East, Central, and Southern Africa

- 17.6M people
- 394 projects
- 16 countries

Middle East, North Africa, and Europe

- 6.8M people
- 264 projects
- 33 countries

Asia and the Pacific

- 68.1M people
- 480 projects
- 24 countries

North America

- 678,000 people
- 22 projects
- 2 countries

IN FISCAL YEAR
2021, CARE WORKED
IN 102 COUNTRIES
AROUND THE WORLD

CARE International Country Presence for FY21:

1. Afghanistan
2. Albania[†]
3. Armenia[†]
4. Australia^{**}
5. Austria^{**}
6. Azerbaijan[†]
7. Bangladesh
8. Belgium[^]
9. Benin
10. Bosnia and Herzegovina
11. Brazil[†]
12. Burkina Faso
13. Burundi
14. Cambodia
15. Cameroon
16. Canada^{**}
17. Chad
18. Colombia
19. Costa Rica[†]
20. Côte d'Ivoire
21. Croatia[†]
22. Cuba
23. Czech Republic^{**}
24. Democratic Republic of the Congo
25. Denmark^{**}
26. Ecuador

27. Egypt^{**}
28. El Salvador[†]
29. Ethiopia
30. Fiji[†]
31. France^{**}
32. Georgia^{**}
33. Germany^{**}
34. Ghana
35. Greece[†]
36. Guatemala
37. Guinea
38. Haiti
39. Honduras
40. India^{**}
41. Indonesia^{**}
42. Iraq
43. Japan^{**}
44. Jordan
45. Kenya
46. Kiribati[†]
47. Kosovo
48. Laos
49. Lebanon
50. Liberia
51. Luxembourg^{**}
52. Libya[†]
53. Macedonia[†]

54. Madagascar
55. Malawi
56. Mali
57. Mexico[†]
58. Montenegro[†]
59. Morocco^{**}
60. Mozambique
61. Myanmar
62. Nepal
63. Netherlands^{**}
64. Nicaragua[†]
65. Niger
66. Nigeria
67. Norway^{**}
68. Pakistan
69. Palestine (West Bank and Gaza)
70. Papua New Guinea
71. Peru^{**}

72. Philippines
73. Romania[†]
74. Rwanda
75. Samoa[†]
76. Senegal[†]
77. Serbia
78. Sierra Leone
79. Solomon Islands[†]
80. Somalia
81. South Africa[†]
82. South Sudan
83. Sri Lanka^{**}
84. Sudan
85. Switzerland[†]
86. Syria[†]
87. Tanzania
88. Thailand^{**}
89. Timor-Leste
90. Togo

91. Tonga[†]
92. Turkey
93. Tuvalu[†]
94. Uganda
95. United Kingdom^{**}
96. United States of America^{**}
97. Vanuatu
98. Venezuela[†]
99. Vietnam
100. Yemen
101. Zambia
102. Zimbabwe

● CARE International Members, Affiliates, and Candidates.

● CARE presence via Country Offices, work with/through partners, or other types of offices.

** CARE International Members, Affiliates, and Candidates.

† Limited CARE presence, mostly working with/through strategic partnerships.

^ The Secretariat has offices in Belgium, Switzerland, and the UK, and staff based in 14 countries.

∅ Other registered offices.

[†] CARE International Members, Candidates, and Affiliates may implement projects and initiatives in their own countries.

CARE International acknowledges the existence of divergent views to certain territories. CARE International aligns with United Nations-sourced maps for consistency purposes; this use does not imply a political statement on any given country or territory.

Thanks to our partners

For the past two years, we all have faced the unparalleled challenge of a global pandemic that has spared no one — no country, no community, no family. It remains with us at a time when the world is facing more armed conflict than ever before and the indisputable effects of climate change can be seen in every region.

Yet, through great uncertainty, we have also seen brilliant rays of hope in the places where CARE works. At the culmination of CARE's 75th anniversary, your partnership helped us reach 100 people in 102 countries, power our largest-ever crisis response, and send millions of CARE Packages to those who need them most. Together, we must continue to champion the power of the human spirit to overcome.

Learn more at care.org.



TOGETHER, WE
MUST CONTINUE
TO CHAMPION
THE POWER OF
THE HUMAN SPIRIT
TO OVERCOME

MALAWI



featured foundations

The Bill & Melinda Gates Foundation has been a core CARE partner since 2001, contributing vital resources to women's empowerment, advocacy, food security, health, family planning, water and sanitation, emergency response, and livelihood programming. New investments built on previous efforts in Uganda, where CARE is moving women's economic empowerment forward at a national scale by serving as a technical adviser and facilitator, helping to create an enabling environment and management capacity support to the government. In Ethiopia, the Women's Empowerment Gender Transformative Opportunities (WE GO) program is institutionalizing gender equality approaches within the Ministry of Agriculture and providing a blueprint for operationalizing their gender strategy through field-level implementation. The foundation supported CARE's humanitarian response following flooding in South Sudan, as well as the Women Respond project, facilitating learning around how women across six sub-Saharan countries were being affected by and responding to the COVID-19 pandemic and ensuring their informed response and recovery efforts. The foundation continued to support CARE's advocacy work, including the Learning Tours program, as well as ongoing efforts to reduce maternal and neonatal mortality in the Indian state of Bihar to strengthen the government health system.

Center for Disaster Philanthropy (CDP) supported CARE's humanitarian response following the Beirut port explosion in August 2020, fueling CARE's rapid provision of hot meals, food aid, emergency cash grants, and shelter assistance, as well as psychosocial support, trauma counseling, and other protections for vulnerable populations, including women and girls at risk of violence.

The partnership also engages local youth and migrant and domestic workers through workforce training to repair homes that have been damaged. CDP also contributed to CARE's response to the second wave of COVID-19 infections in India. The investment launched local deployments of trained medical and technical support staff in Bihar state, provided lifesaving medical equipment, and augmented continuing care with technology innovations.

The David and Lucile Packard Foundation and CARE launched a new integrated approach to building sustainable livelihoods and communities in Ethiopia. The project improves access to health services; provides tools for natural resource management and climate-sensitive livelihoods; addresses inequitable gender power dynamics; and strengthens multi-sectoral sexual and reproductive health systems, providing a holistic, interdependent package of programs designed for multiplied impact.

Educate a Child, a program of the Education Above All foundation, partnered with CARE for the second phase of *Waxbar Carurtaada* (Educate Your Children) in Somalia. The three-year initiative will operate in 17 districts in five regional states, ensuring that more than 50,000 out-of-school children affected by instability, displacement, social exclusion, and poverty have increased opportunities to enroll and complete a quality primary education. The project will strengthen local governance structures and community support around school safety and inclusive and gender-sensitive education, increasing enrollment rates among marginalized groups, including girls and the extremely poor.

featured partners

TIFFANY & CO.

TIFFANY & CO.

Between July 1 and August 31, 2020, Tiffany & Co. held a cause marketing campaign in which 100% of the profits from the Tiffany Infinity collection supported CARE's Crisis Response Campaign. The response from consumers was overwhelmingly positive — raising more than \$3.8 million to address financial resilience for the most vulnerable communities affected by COVID-19, particularly women and people of color.

CARE has already worked with more than 80,000 women and their families in 16 countries. We are on track to surpass our goal of supporting 150,000 people whose lives have been devastated by COVID-19.

CARE is responding in the U.S., where the pandemic has disproportionately impacted marginalized and low-income women. Tiffany & Co. is helping CARE reach a milestone of delivering 10 million CARE Package meals and millions in income for low-wage workers.

Around the world, CARE is unlocking the powerful potential of women and girls who have been hardest hit. We've met urgent needs by providing cash, food, COVID prevention trainings, and support for frontline workers. To help women build back stronger, we're delivering financial trainings, establishing savings groups, helping women open bank accounts, supporting micro entrepreneurs, and empowering women to increase their earnings.



DEMOCRATIC REPUBLIC OF THE CONGO

TOGETHER, WE MAKE A DIFFERENCE



UPS

Whether it is a sudden emergency or an ongoing crisis, The UPS Foundation has been by CARE's side since 1995, aiding people in need around the world.

In the wake of COVID-19, UPS worked with CARE to not only respond to the surge in India but also to work toward long-term solutions to the pandemic through CARE's Fast and Fair initiative, which aims to provide equitable worldwide vaccine assistance for 100 million vulnerable people and 275,000 healthcare workers.

With a 2021 investment totaling \$1 million, UPS has used its partnerships, resources, and logistics expertise to ensure that CARE's humanitarian work reaches the most people, efficiently. With UPS's support, CARE has been better able to respond to emergencies around the globe, including this year in Haiti, India, and South Sudan, and through CARE's Humanitarian Surge Fund, which enables CARE to respond quickly when emergencies strike anywhere.

UPS's support has also allowed CARE to prepare for emergencies through a supply chain management program that revolutionized the way CARE tracks and delivers critical supplies for COVID-19 and other emergencies. These warehouse management tracking systems have been implemented in six countries in West Africa and continue to scale, delivering lifesaving aid to millions.



Coca-Cola

CARE, The Coca-Cola Company, and its philanthropic arm, The Coca-Cola Foundation, have partnered for more than 30 years, with funding for emergency response; water, sanitation, and hygiene (WASH); and women's economic empowerment programming. Generous support from The Coca-Cola Foundation enabled CARE to launch and deliver CARE Packages in the United States for the first time in our history. The grant supported distribution to vulnerable populations impacted by the COVID-19 pandemic in six U.S. cities and helped CARE exceed its goal of distributing 1 million relief packages by the 75th anniversary of the CARE Package in May 2021.

The Coca-Cola Foundation was an early supporter of CARE's Fast and Fair COVID-19 vaccination campaign to facilitate equitable vaccine distribution, combat misinformation and vaccine hesitancy, and protect frontline health workers. Through this partnership, we are closing the gaps that slow vaccine delivery, including in some of the most difficult environments in the world, and successfully drawing attention to last-mile delivery and gender-related barriers.

donors and partners

Global Leadership Society

Cumulative Lifetime Giving:
\$1,000,000+

Abbott
David T. and Jean K. Akers
Alliance for a Green Revolution in Africa
Amway
Nancy K. Anderson
The Annenberg Foundation
Anonymous (37)
Armacost Charitable Remainder Unitrust
The David R. & Patricia D. Atkinson Foundation
The Atlantic Philanthropies
Estate of Barbara L. Bacich
James and Marietta Bala
Mr. E. T. Baldrige
Margaret D. and Matthew T. Balitsaris
Paul and Mary Jan Bancroft
Bank of America
Baxter International Foundation
Ben and Luanne Russell
Benevity
The Bezos Family Foundation on behalf of Students Rebuild
Ken Birman and Anne Neiryneck
Blackstone
The Arthur M. Blank Family Foundation
Bloomberg Philanthropies
Estate of William E. Boeing III
The Dietrich W. Botstiber Foundation
Estate of Daniel L. Brenner
Finn Brooks Family Foundation
The Howard G. Buffett Foundation
Helen and Harold Buirkle
Priscilla Bullitt Charitable Trust

C.E. and S. Foundation Inc.
Cargill
Eduardo Castro-Wright and Fabiola De Castro
Catholic Relief Services
The Chubb Corporation
Cisco Systems Inc. and the Cisco Foundation
The Coca-Cola Company
Estate of Priscilla B. Collins
The Community Foundation for Greater Atlanta
Community Foundation for Southern Arizona
Community Foundation of Greater Memphis
Covance Inc.
Credit Suisse
Credit Suisse Americas Foundation
Susan M. Crown
Estate of J. W. Culler
Michael and Susan Dell Foundation
Delphi Asset Management
Delta Air Lines
Estate of Elaine Dooman
Dubai Cares
Educate a Child
Estate of Mark Eisner Jr.
Joseph H. and Barbara I. Ellis
ELMA Philanthropies
Nancy L. Evans Admin Trust
Everett/O'Connor Charitable Trust
Estate of Lucia P. Ewing
Facebook
Estate of Saralee Fine
Estate of Janet A. Fisher
The Flatley Foundation
The Ford Foundation



The Frees Foundation
Estate of Esther Freier
Lloyd A. Fry Foundation
Gap Foundation
Bill & Melinda Gates Foundation
GE Foundation
General Mills Foundation
Global Environment Technology Foundation
Global Impact
Goldman Sachs
Estate of John M. Harding
Estate of Juliet F. Harding
Wayne R. and Camellia A. Helsel
The William and Flora Hewlett Foundation
Conrad N. Hilton Foundation
Justin S. and Hilarie V. Huscher
Glenn H. and Deborah Dow Hutchins
Jahn's Private Charitable Foundation
Johnson & Johnson
Sheila C. Johnson
The Jordan Family
Steve Joyce
JPMorgan Chase Foundation
A. Morris Williams Jr.
Michael G. and Nancy O. Kaehr
Peter H. and Joan M. Kaskell
Dean C. and Elizabeth H. Kehler
Rosalind and Michael Keiser
W.K. Kellogg Foundation
The Kendeda Fund
Estate of Mary B. Ketcham
Julie Konigsberg
The Kresge Foundation
Latter-day Saint Charities
The LeBrun Foundation
Levi Strauss Foundation
Elizabeth M. Lutas
The John D. and Catherine T. MacArthur Foundation
Mars Inc.
John Martello
Mastercard
The MathWorks Inc.
The Anita M. McCullough Living Trust
The Andrew W. Mellon Foundation
Merck & Co. Inc.
H. Conrad III and Sarah S. Meyer

Microsoft Corporation
Millennium Water Alliance
Mondelēz International Foundation
Gordon and Betty Moore Foundation
William S. and Jane R. Mosakowski
Charles Stewart Mott Foundation
Multiple District 19 Lions
Estate of Julia Van Munster
Estate of Mary E. Murdock
The New York Community Trust
NIKE Foundation
Oak Foundation
Daniel Oliver Revocable Trust
Open Society Foundations
Oracle
Orange County Community Foundation
The Osprey Foundation
Estate of Leonard R. Overton
The David and Lucile Packard Foundation
The Panaphil Foundation
The Peierls Foundation
Jim Pentecost
The PepsiCo Foundation
Pew Charitable Trusts
Pfizer Inc.
The Pfizer Foundation
The Picower Foundation
Power and Telephone Supply Company
Procter & Gamble Company
Genie and Scott Randell
Reach Out to Asia
The Rockefeller Foundation
Estate of Hazel Gibbons Ross
Adelia Russell Charitable Foundation
John and Virginia Sall
Sall Family Foundation
Sheryl Sandberg and Tom Bernthal
Saperlipopette
Estate of Kendrick Schlatter
Estate of Ronald and Elisabeth Schodt
Schultz Family Foundation
The Charles Schwab Corporate Foundation
Silicon Valley Community Foundation
Harold Simmons Foundation
Brian J. Smith and Laurel Spellman
David A. Smith and Nancy H. Smith

Sony Music Entertainment
Theodore R. and Vada S. Stanley
Starbucks Coffee Company
The Starr Foundation
Start Small Foundation
The Sunbridge Foundation
Estate of Leonard Surratt
Estate of Samuel H. Talley
Target
Daniel M. Tellep
The David Tepper Charitable Foundation Inc.
The Tides Foundation
Tiffany & Co.
TOSA Foundation
Trehan Foundation
William D. Unger
United Nations Foundation
The UPS Foundation
Visa Inc.
Deidra J. Wager
The Walmart Foundation
Weyerhaeuser Company Foundation
Michael and Geraldine Wiles
Thomas L. Williams Trust
The Willow Springs Foundation
Wisconsin Evangelical Lutheran Synod
The Robert W. Woodruff Foundation

Global Leadership Society

FY21: \$1,000,000+

Abbott
Anonymous (2)
Paul and Mary Jan Bancroft
Blackstone
Cargill
Educate a Child
Nancy L. Evans Admin Trust
The Flatley Foundation
Bill & Melinda Gates Foundation
General Mills Foundation
Hutchins Family Foundation Inc.
Steve Joyce
Julie Konigsberg
Latter-day Saint Charities
Mars Inc.
The MathWorks Inc.
Mondelēz International Foundation

The David and Lucile Packard Foundation
Procter & Gamble Company
Martin Reinheimer Trust
Sall Family Foundation
Start Small Foundation
Tiffany & Co.
The UPS Foundation
Thomas L. Williams Trust

Founder's Council Violeta Chunchu Society

FY21: \$500,000-\$999,999

Mr. and Mrs. Allen
Anonymous (2)
The David R. & Patricia D. Atkinson Foundation
Bank of America
Benevity
The Bezos Family Foundation on behalf of Students Rebuild
The Arthur M. Blank Family Foundation
Finn Brooks Family Foundation
Carlin Family
Center for Disaster Philanthropy
The Coca-Cola Company
Estate of Richard A. Cramer
Facebook
The Jordan Family
William S. and Jane R. Mosakowski
Estate of Leonard R. Overton
The Rockefeller Foundation
Estate of Curt Strand
TOSA Foundation

Founder's Council Lydia Marshall Society

FY21: \$250,000-\$499,999

Amway
Airbnb
Anonymous (2)
Astellas Global Health Foundation
The Dr. Martin Balser Impact Fund
Eduardo Castro-Wright and Fabiola De Castro
Cisco Systems Inc. and the Cisco Foundation
Colgate-Palmolive
Alison A. Cornell
The Eleanor Crook Foundation

Douglas Dunn and Donna Gaab
 Estate of Frederick E. Fichter
 Jay Hallik and Vanessa Hallik
 Justin S. and Hilarie V. Huscher
 Thomas M. Leahey
 Levi Strauss Foundation
 Estate and Revocable Trust of Meilin Lin
 Elsie R. Mannweiler Revocable Trust
 Mastercard
 Estate of Judith F. McGee
 Microsoft Corporation
 New Venture Fund
 Novelis Inc.
 The Osprey Foundation
 Chang K. Park
 The Peierls Foundation
 PricewaterhouseCoopers
 Public Consulting Group
 PVH Corporation
 Estate of Jean Robinson
 David A. Smith and Nancy H. Smith
 Patricia Smith and Paul Werner
 United Nations Foundation
 The Duncan and Mercedes Williams
 2006 Family Trust

Founder's Council Murray Lincoln Society

FY21: \$100,000-\$249,999

David T. and Jean K. Akers
 Nancy K. Anderson Trust
 Anonymous (9)
 AptarGroup Inc.
 James and Marietta Bala
 Dr. Cori Bargmann
 Richard E. Berry Trust
 Peter and Sarah Beshar
 Ms. Katherine Bishop
 Thomas C. Bishop
 Bok Family Foundation
 Helen and Harold Buirkle
 Estate of Emily B. Campbell
 Scott Gordon Campbell Living Trust
 Leonard Cargan Irrevocable Trust
 Ted and Catherine Carlson
 Carnegie Corporation of New York
 John S. and Sherry H. Chen
 Estate of Donald Christianson
 Estate of Billy Morris Davis
 Stephen Esser and Dana Dortone

Sibyl Frankenburg and Steven Kessel
 The Frees Foundation
 Virginia Fulton
 Gap Inc. and the Gap Foundation
 Global Environment Technology Foundation
 Charles C. Grimes Revocable Living Trust
 Eliyahou and Britt Harari
 Susan Hassan
 Scott Hawks
 Gerda W. Hoover Trust
 Eugene P. Jacoby
 Johnson & Johnson
 Dave Jones
 Rosalind and Michael Keiser
 Charlotte Keuscher-Barkman Living Trust
 Peter H. Lunt and Pilar Vasquez-Lunt
 Tessa Lyons and Sam Steyer
 Ken Birman and Anne Neiryneck
 Susan O'Connor
 Robert D. O'Toole
 Olivela Inc.
 Palo Alto Networks
 The PepsiCo Foundation
 Kathryn and Mark Petralia
 Genie and Scott Randall
 Horacio Rozanski
 Estate of S.O. Rystad
 SAP Concur
 David J. Shevrin
 Jon and Kim Shirley
 Shockwave Foundation
 Silicon Valley Community Foundation
 Harold Simmons Foundation
 The Skoll Foundation
 Timothy J. and Lisa Sloan
 Brian J. Smith and Laurel Spellman
 Jonathan Soros
 Starbucks Coffee Company
 Estate of Alan Talbert
 Tambourine
 Samuel E. & Mary W. Thatcher Foundation Inc.
 Tijori Foundation
 Trehan Foundation
 Sheldon Wolfe Revocable Trust

Founder's Council Lincoln Clark Society

FY21: \$25,000-\$99,999

AB InBev
 Joseph and Sophia Abeles Foundation Inc.
 Harry & Jane Alburger Charitable Trust
 The Alcon Foundation
 Allbirds
 Alpha and Omega Semiconductors
 American Express
 Anonymous (18)
 Joyce R. Anson Management Trust
 The Appletree Fund
 Lionel Arnold Trust
 AT&T
 Eleanor B. Badalich Trust
 James N. Bailey
 Patricia Barmeyer
 Dennis M. Barry
 David Bentley
 Daniel Berger
 Estate of Susanna W. Berger
 Lawrence Blaskopf
 Madeline and Alan Blinder
 Gladys E. Bonilla Life Insurance
 Booz Allen and Hamilton Inc.
 The Dietrich W. Botstiber Foundation
 The Branson Family Foundation
 Mary A. Brauer
 Estate of Michael M. Brennan
 James and Adean A. Bridges
 Bright Funds Foundation
 Brown Family Endowment
 Buddhist Global Relief
 Jay and Carolyn Buffenmyer
 Mary Catherine Bunting
 Donald Burriss Trust
 Susan Okie Bush
 The Cable Company LLC
 John Stephen Caflich and Elizabeth Caflich
 The Cedars Foundation
 Celo Foundation
 Natalia Chefer
 The Chicago Community Foundation
 The Chicago Community Trust
 Citi
 John R. Cleveland
 Cogán Family Foundation
 H. Rodgin Cohen

Estate of Ruth G. Collins
 Comcast Corporation
 Dick Crawford
 Christy Cressey Foundation
 Glen A. and Lynne Cunningham
 CytoSorbents
 Jacob W. Dale and Jason Liptak
 Mr. Karl Dasher and Mrs. Erin Dasher
 Debicki Foundation
 Orville Dietel Trust
 Shirley A. and Terry Dobson
 DoorDash
 John D. Dreisbach
 DTE Energy Foundation
 Estate of Alfred L. Dykstra
 The Walter and Ursula Eberspacher Foundation
 Eleanor Edmondson
 Bart D. Ehrman
 Doug and Florida S. Ellis
 Ray Ellis
 The Ellis Foundation
 Scott C. and Elizabeth P. Evans
 Bert E. and Candace M. Forbes
 Estate of Shirley J. Foster
 Lloyd A. Fry Foundation
 Estate of John P. de Gara
 Rosemarie E. Gatehouse Trust
 Deirdre M. Giblin and David B. DuBard
 The Wilbur and Hilda Glenn Family Foundation
 Global Impact
 Leonard C. Goodman
 The Donald G. Goodwin Family Foundation Inc.
 Jill R. Gordon
 Robert D. and Linda Graham
 The Gray Jacklin Charitable Trust
 Jeffrey Greve and Janis Kahn
 Ms. Amy S. Guth and Timothy F. Guth
 Peggy Hamburg and Peter Brown
 Douglas W. and Tsognie Hamilton
 Everett Harper
 Harris Philanthropies
 Dale and Louise Henderson
 John T. and Felicia K. Hendrix
 Carl Hess and Tracy Pirnack
 Larry and Terry Hill
 Hoag Family Charitable Foundation
 Stephen Hoffmeister
 Robert Horowitz

Julia Huiskamp
 David L. and Sara E. Hunt
 Alan and Glen G. Husak
 The Imlay Foundation Inc.
 IMVU
 E. Neville and Pamela A. Isdell
 Paul J. and Deborah K. Jansen
 Alan K. and Cledith M. Jennings Foundation
 Radhika Jones
 Eric Jorgensen
 Joshua Klayman
 Robert Koch
 Cynthia Kriebel
 Ronni S. Lacroute
 Charles Lamar Family Foundation
 The Family of George M. and Mary Jane Leader
 Loreal LeGate
 The Leibowitz and Greenway Family Charitable Foundation
 Lamar Leland
 Jared Levy and Alba Alamillo
 The Lichtenberger Foundation
 Lookout
 Lubert Family Foundation
 Lurie and Vogelsong Charitable Fund at the Community Foundation of Northern Nevada
 Ruth MacCartney Charitable Trust
 Frank and Susan Mars
 Estate of Paul S. Marsh
 June Mathis
 Kathleen McCarthy/KLM Foundation
 McCormick & Company Inc.
 The Bhupat & Jyoti Mehta Family Foundation
 H. Conrad III and Sarah S. Meyer
 Mimecast
 Joseph H. and Cynthia G. Mitchell
 Morgan Stanley
 Multiple District 19 Lions
 Herbert V. Nootbaar Fund
 Nordstrom
 The Colleen & Sam Nunn Family Foundation
 Christopher O'Leary
 Obediah Fund of the Coastal Community Foundation of South Carolina
 Open Society Institute
 Paradise on Earth Fund
 PayPal

Jim Pentecost
 Estate and Trust of Angelina P. Perdomo
 Kathleen Peto and Daniel Rice
 Mr. David Peyton
 Leslie and William Pretsch
 Connie and John Rakoske
 Raytheon Company
 Martha L. Rees
 Estate of Frederick Reif
 Marsha Slater Rider, Ph.D.
 *David Rose
 George J. Rosenkranc Charitable Trust
 The Dorothea Haus Ross Foundation
 Rotary Club of Atlanta
 David Rouleau
 Michael Sachse and Erin Segal
 Salesforce
 Dr. Scholl Foundation
 Jean Sharbel Living Trust
 Henry and Christina Shea
 Estate of Leo Shryock
 Estate of Jeffrey Skeer
 Southface Energy Institute
 The Spurlino Foundation
 Christine and Mark St. Clare
 Mr. Hayes Stover and Mrs. Patricia Stover
 Norma Jean Sulzberger Trust
 Summit Charitable Foundation
 Sunbites
 The Ping Y. Tai Foundation Inc.
 Textron Inc.
 Estate of Richard W. Thomas
 Trimble
 Tsadik Foundation
 Clyde Tuggle and Mary Streett
 Tull Charitable Foundation Inc.
 William D. Unger
 United Launch Alliance
 United Nations Office for Project Services
 Kathleen Van Boven
 The VF Foundation
 VMware
 Deidra J. Wager
 Waldemar H. Wenner
 Marc K. Whitehead and Sheila M. O'Brien
 Mardys Whiteman Trust
 Estate of Joyce Karyl Winn
 The Ann S. Wolff Living Trust



BANGLADESH

Sara and Robert Wright
Dr. and Mrs. Yates
The Zeist Foundation

**Founder's Council Arthur
Ringland Society**

FY21: \$10,000-\$24,999

3i Partners
Iman Abdulmajid
Joseph Abraham
Active Media Services Inc.
Kenneth L. Adams
AIKON
Michiko Aizawa
M. Sohail Akbar
Runa Alam
Marc Allen
George and Herawati Alvarez-Correa
Estate Frank Amato
American Endowment Foundation
Michelle and Bob Atchinson
Craig G. Anderson
John Archibald Anderson CRUT
Eugenius and Agnes Ang
Anonymous Auth0 (25)
Aviv Foundation
ba&sh
Thomas and Marcia Baertlein
Bainum Family Foundation
Margaret D. and Matthew T. Balitsaris
Cecile Falk Balsler
Oneil Banks
Matthew J. Bannick Family Fund
Judy Barto
Elizabeth J. Batarse
Julia H. and Michael A. Becke
Michael G. and Diane Beemer
Darius Behnam Trust
William Behrens
Gerald W. Bernstein
Lyle G. and Susan A. Best
William Biggs
Donald and Sheila M. Billings
Oliver and Jenny Blackman
Edmund H. Blakeman Trust
Marcia W. Blenko and Don B. Blenko Jr.
John W. Bloom
Karl and MaryAnn Boehmke
Darlene Bookoff
Alastair and Jeanine Borthwick
Vito Braccino

John and Margaret Brennan Charitable
Trust
The Briar Foundation
Johanna Brookner
Charles W. Bruno
Jim Bullock and Ralph Elder
Molly Burke
The Burkehaven Family Foundation
Robert W. and Patti B. Burns
Patrick Butler
Charles C. Cahn Jr.
Martha Campbell
Lauretta Cappiello Living Trust
Walter C. D. Carlson and Debora De
Hoyos
Estate of Elisabeth W. Case
Jessica Case
Mary Warren Case and Stanley E. Case
Gerhard and Regina Casper
Cepheid
Mike and Julie Chang
Sylvia Chin
Sailesh Chittipeddi
Heinke K. Clark
The Cleveland Family Foundation
Frank P. Cofone
Jennifer Cole
Titilope Cole
Ruth M. Collins
John and Stephanie Connaughton
William J. Cook Trust
Adriana Corinaldesi
Cornerstone Research
Cowen and Company LLC
Joshua Criscoe
Susan M. Crown
Stephen Cumbie
Gerald R. and Jeanne Curtis
Thomas J. Cutillo and Priscilla A.
Myrick
Canute Dalmasse
Richard T. and Sally S. Dawson
Consuelo and Saul Diaz
Mark Dickinson and Letizia
Stanghellini
Bob and Terri DiMeo
Discovery Communications Inc.
Kenneth Douglass Foundation
Michael and Regina Dowd
Ann P. Dursch
Robert J. and Kimberly W. Eck
John Eckfeldt and Nancy Shultz



Ecolab
The Eirenikos Foundation
Thomas Eldridge and Jennifer Maron
Connie Ellerbach
Joseph H. and Barbara I. Ellis
Todd and Dorothy Evans
Herbert and Jeanette Evert
Patricia Weiss Fagen
James W. and Tammy G. Felt
Leon Ferder
David L. Ferrera and Vinita Chopra
Ferrera
Tracy Ferron
FIS Foundation Inc.
Edward R. Fisher Charitable
Foundation
Sarah Fisher
Warren and Deb Fisher Fund
Jody F. Fleischer
Lewis Fountain
Russell J. Frackman and Myrna D.
Morganstern
Estate of Robert B. Francini
Robert Fraser
Annie Bennett Glenn Fund
The J.B. Fuqua Foundation
Margaret W. Furey
Geller & Company
General Electric
Sander Gerber
Nancy E. Gibbs, M.D.
Edward K. Giles
Mary Ginn
Penelope Goodfriend
Geoffrey A. Goodman
Google
Martin and Kerrilee Gore
Jim and Carol Green
Steven M. Greenberg and Avra
Goldman
Estate of Mary E. Greene
James E. Grindlinger Trust
Grosvenor Building Services
Winston and Helen Guest
Elizabeth Gunn
Vineet Gupta and Mudita Jain
The Marc Haas Foundation
Linda and Frederick Haddad
Charlotte and Floyd Hale
Paul R. and Lisa Haller
Douglas and Mary Hallward-Driemeier
Karen Halvorsen

Mary M. Hasten and Brien O'Brien
Mark Heising and Elizabeth Simons
Julie* and Bayard Henry
Wes Heppler
Ellen Hertzmark
Estate of Laura E. Higginbotham
Paul Higgins
Hilton
Deborah M. Hinton and J.R. Rowlett
Daniel Hitchcock
Hobson/Lucas Family Foundation
Honeywell International
Sandra Horbach and Steve Skoler
Winnifred Howard Trust
Lincoln Howell
Carl C. and Marilyn Hug
Tom and Julie Hughes
Joseph V. Huntington
Richard Hurley
Ana and Tanvir Hyder
Henna Inam
William and Elaine Jermann
Richard J. and Involut V. Jessup
Julia G. Johns
Tom and Edwina Johnson Family
Foundation
Estate of Carolyn Ann Jones
Judith Kadish Trust
Michael G. Kaehr
The Ina Kay Foundation
Michael and Carol Kearney
Kevin J. and Pamela M. Kelly
Michael A. and Dona M. Kemp
Maria Kenny
Richard and Gloria Kerns
Frederick Kerrest and Sara L. Johnson
Kindergarten Unit Foundation
Annie Lamont
Estate of Carl E. Langenhop
Maria Lasagabaster
Pauline P. Lee
Kenneth A. and Lucy G. Lehman
Leidos
James G. and Carol A. Lertola
Les Oiseaux Foundation
Janet Lewis
Gregory J. Lincoln
The Litterman Family Foundation
Edward and Claire London
LSP Family Foundation
Raja Malkani

Joseph and Laurel Mancino
Joseph R. and Linda K. Manthey
Maurice Marciano Family Foundation
Estate of F. Heywood Marsh
Michael L. and Lydia M. Marshall
Paul J. Marvin
Louis S. Mastriani
Robin and Peter Matt
Brian K. and Anne S. Mazar
Kevin G. McAnaney and Catherine R.
McCabe
Pamela B. McCabe
John McFadden and Lisa Kabnick
Martin McGlynn
Ray C. McKinley Family Foundation
Ralph E. McLain Trust
Gregory S. and Lori A. McMillan
Medallia
Mandira Mehra
Christopher D. Miller and Catherine
McNamee
Glen S. and Alison Milliman
Lizanne and Robert Milton
Edward and Ginger Mitchell
The MITRE Company
Hala Mnyamneh
Mukund and Shanta Modak
John Moore
James Starr Moore Memorial
Foundation
Merle and Ellen Morgan Gift Fund
Tyler Morrey
Kristina and Patrick Morton
Sandra Moss
Mouat Charitable Trust
The Muir House Foundation
Adm. Mike Mullen
Chris L. Nelson
Frederick Nelson
Luellen J. and Ronald G. Newmann
Arthur C. Nielsen Jr. Family Charitable
Trust
Togo and Eleanor Nishiura
The Esmond Nissim Foundation
The William and May D. Norris
Foundation
Paul and Barbara Nowak
Maureen O'Hara and David Easley
Estate of Catherine E. O'Leary
Matthew P. and Ellen O'Loughlin
Estate of Robert D. O'Rourke
Paul Oakland

Estate of Ronald J. Ocken
Okta
Dr. Gregory Olsen
Douglas and Marcia Olson
Optimum Compounding
Amy and Paul Osenar
Jonathan and Robin A. Painter
Paramount Studios
Naman Parekh
Estate of Loretta A. Park
Estate of Juliet Patterson
Alan Pedersen and Lesley Pedersen
Peine Family Fund
Louis Perwien
Dede Pickering
Judy Pigott
Pinterest
Christopher and Tara Poseley
Nancy Powell
Estate of Howard F. Prass
Kevin Pratt and Pamela Lane Pratt
Estate of Ingeborg T. Price
Pritzker Pucker Family Foundation
R.K. Squire Company
Arvind Rajan and Kelle Young
Dinkar Rao
Trust of Maurice G. Raymond
Robert S. Reese
The Jennine Regas Trust
Wendell S. and Mary L. Reilly
Barbara and Jack Reis
Theodora Retsina
Gordon and Jean Riel
Sarah F. Roach
Jim Rochelle
Mrs. Rogers
Mr. Bruce Rosenblum and Ms. Lori
Laitman
Ray and Meredith Rothrock
Paul and Joan Rubschlagel Foundation
Rue La La
Lisa Ruskowski and William McGlone
John W. Ryan and Jenny P. Scheu
English G. Sall
Carrie P. Sample
SAP
Dan M. and Pam Sargent
Susan M. Schaffer and Joan Hinckley
The Schimmel Family Foundation

The Helen and Aaron Schlaffer Foundation Trust
 Glenn Schmitt
 Charles Schwab Foundation
 Gregg S. and Kim J. Sciabica
 Richard and Carol Seltzer
 Sudhir and Jyotsna Shah
 Fay H. and Ann Sherman
 The Shymanski Trust
 Sikand Foundation Inc.
 Doug and Fabienne Silverman
 Steve and Eileen Simmons
 Skyscraper Foundation
 Don S. and Jane B. Slack
 Leonard John Slaman Trust
 Ronal W. and Nancy L. Smith
 Carolyn Smith and Neil Soiffer
 Timothy D. Smith and Karen E. Miller
 Jonathan Solovy and Stacey Fisher
 Martin J. Spalding
 Malcolm K. and Penelope J. Sparrow
 The Honorable Richard V. Spencer
 Krishnakumar and Rama Srinivasan
 Brien M. and Cynthia S. Stafford
 Lois and Arthur Stainman
 Campbell Steward
 Martin Sticht
 Harold and Lambertha Stier
 Diana L. Strassmann and Jeffrey Smisek
 Martha and William Stueck
 Sub Pop Records
 Estate of Dorothy J. Swanson
 Tim Tassopoulos
 Mr. and Mrs. Taylor
 Lisa Thomas
 Elizabeth S. Thompson
 John A. Thompson Jr.
 Michael Thompson
 The Trio Foundation of St. Louis
 Truist
 Jane Vadnal IRA Beneficiary
 Lisa and Jim Valone
 Lance Van Dam
 Estate of Anna R. Vilkaitis
 The Rafael & Diana Vinoly Foundation
 Virtu Financial
 Paul and Susan Vogel
 W. P. Carey Inc.
 Christine Wächter-Campbell
 William and Cathy Waters

The Watson Foundation Inc.
 Estate of Max H. Weaver
 Doug and Tara Weckstein
 Lincoln Weed
 Rosalie J. Coe Weir Foundation
 Jack Weisberg Charitable Foundation
 Estate/Trust of Shirley J. Weiss
 Joachim F. and Rose D. Wernicke
 Alison M. West
 David J. Whippo
 James D. Whitehead
 James Whitlock
 Michael and Geraldine Wiles
 Wendy Dorthea Williams
 Michele Williams-Abbott and John Abbott
 Barbara and Edward Wilson
 Fred and Sue Wintermantel
 Ron and Kathy Wittig
 The Carvel and Margaret Wolfe Charitable Fund
 Women's Refugee Commission Inc.
 World Bank Group
 Vivian Wu
 Daniel Yates and Tobie Whitman
 Michael and Diane Ziering

Circle 75

Donors who have made a special \$75,000 gift to CARE in support of the Crisis Response Campaign

James and Adele Abrahamson
 H.E. Sheikh Meshal bin Hamad Al Thani
 Anonymous (4)
 Paul and Mary Jan Bancroft
 Cori Bargmann
 Peter and Sarah Beshar
 Mary A. Brauer
 Martha and Toby Brooks
 Molly Burke
 Ted and Catherine Carlson
 Heinke Clark
 Dick Crawford
 The Davee Foundation
 Fabiola de Castro and Eduardo Castro-Wright
 Doug Dunn and Donna Gaab
 Ceree Eberly
 Harold Simmons Foundation
 Jack and Caroline Hardin
 Scott Hawks

Karen and Mark Holzberg
 Neville Isdell
 Kristen Keirse and Bill Stanhope
 Rosalind and Michael Keiser
 Jake Dale and Jason Liptack
 Bill and Lisa McGahan
 Colleen and Senator Nunn
 Christopher O'Leary
 Paradise on Earth Fund
 Martha Rees
 Reilly Family Fund
 Cammie and John Rice
 Henry and Christina Shea
 Jon and Kim Shirley
 Timothy and Lisa Sloan
 Lois and Arthur Stainman
 Clyde Tuggle and Mary Streett
 Deidra Wager
 Joe and Rose Wernicke



CARE leadership

GLOBAL MANAGEMENT TEAM

Stacy Aldinger

Chief of Staff and Strategy

Claudine Mensah Awute

Vice President for International Programs and Operations

John Aylward

Chief Marketing Officer

Tatiana Bertolucci

Regional Director for Latin America and the Caribbean

Rani De Silva

Chief Financial Officer

Madhu Deshmukh

Vice President of Program Strategy and Impact

Melissa Heggie

Chief People, Equity, and Inclusion Officer

Eric D. Johnson

General Counsel

Deepmala Mahla

Vice President of Humanitarian Affairs

Dr. Muhammad Musa

Regional Director for Asia

Michelle Nunn

President and CEO
CARE USA

Sarah Taylor Peace

Chief Revenue Officer

Matthew Pickard

Acting Regional Director for East, Central, and Southern Africa

Ritu Sharma

Vice President of U.S. Programs and Policy Advocacy

Nirvana Shawky

Regional Director for Middle East and North Africa

Balla Sidibe

Regional Director for West Africa

Gloria D. Steele

Chief Operating Officer

Lona Stoll

Vice President of Impact and Innovation
Chief Innovation Officer

BOARD OF DIRECTORS

CHAIR

Glenn Hutchins

Chairman, North Island
Co-Founder, Silverlake

VICE CHAIRS

Susan Hassan

Founder
Sea Dune Partners

Radhika Jones

Editor-in-Chief
Vanity Fair

TREASURER

Kathryn Petralia

President and Co-Founder
Kabbage Inc.

SECRETARY*

Eric Johnson

General Counsel
CARE USA

MEMBERS

Runa Alam

Co-Founder and CEO
Development Partners International

Dolika Banda

Former Director
International Finance Corporation,
World Bank Group and CDC Group
Plc, UK

Martha Brooks

Former President and COO
Novelis Inc.

Charlie Dent

Former Congressman and
Policy Advisor

Michèle Flournoy

Co-Founder and Managing Partner
WestExec Advisors

Jay Hallik

Managing Director
Morgan Stanley

Everett Harper

CEO and Co-Founder
Truss, The Infrastructuralists

Seema Jayachandran

Professor of Economics
Northwestern University

Stephen P. Joyce

CEO and Director
Dine Brands Global

Mohamed Kande

Vice Chairman and U.S. Advisory
Leader/Global Advisory Leader
PwC

Tessa Lyons-Laing

Director of Product
Instagram

H. Conrad Meyer III

Private Investor

Valerie Montgomery Rice, M.D., FACOG

President and Dean
Morehouse School of Medicine

William Mosakowski

CEO and Founder
Public Consulting Group Inc.

Jane Mosbacher Morris

CEO and Founder
To the Market

Michelle Nunn

President and CEO
CARE USA

Christopher D. O'Leary

Former Executive Vice President
General Mills Inc.

Una Osili

Associate Dean, Research and
International Programs
IUPI

Horacio Rozanski

President and CEO
Booz Allen Hamilton Inc.

English Sall

Board Member
Sall Family Foundation

Richard Stengel

Senior Advisor
Snapchat

Board Emeritus

Virginia Sall

Co-Founder
Sall Family Foundation

TANZANIA



2021 financial overview



Letter from the CFO

2021 marks the 75th anniversary of CARE, when the first CARE Package was delivered in May 1946 to war-torn Europe. Seventy-five years on, we continue to deliver on our commitment to support global humanitarian crises. As we embarked on another extraordinary year, we saw many countries across the world challenged by COVID-19 pandemic variants that continue to impact the livelihoods of women and girls. We adapted to the changing context and pivoted our global operations to reach more vulnerable communities across the world, enabling us to serve 100 million people in over 102 countries through 1,495 active projects.

Our success in 2021 resulted in CARE supporting 14 million people to advance gender equality; 85% of our projects integrated gender into their work. We helped 24.1 million people who were affected by humanitarian crises to meet their basic needs and provided access to food, water, and nutrition for 33.9 million.

CARE's total revenue grew by 19% to \$732 million in fiscal year 2021. Private revenue of \$191 million was up 62%

from FY20, with strong performance across all channels, particularly in Major Gifts and Corporate fundraising. Total program expenses, covered primarily by restricted funds, were \$45.7 million above the original budgets due to implementations of humanitarian programs in the Middle East and East and Southern Africa.

We are tremendously grateful for the generous support from our private donors, the U.S. government, and other institutions that helped CARE advance our mission.

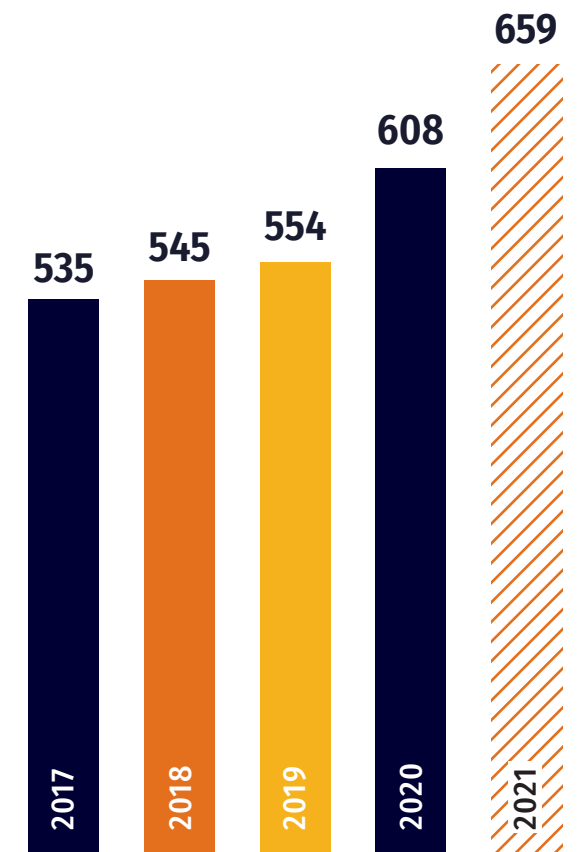
We count on your continued support and contribution in 2022, as we deliver quality services to save lives, defeat poverty, and achieve social justice.

Thank you

Ranil De Silva
Chief Financial Officer

WE ARE PROUD THAT WE WERE ABLE TO GROW PROGRAM EXPENSE OVER TIME, BY 23% FROM 2017 TO 2021.

Program Expense Growth (in millions)



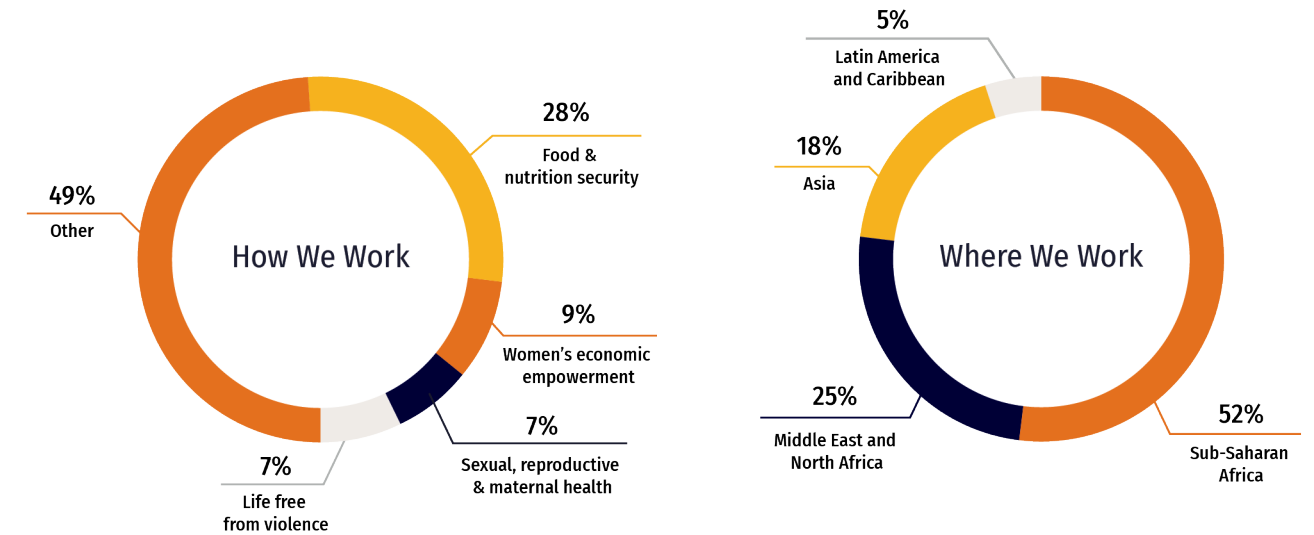
CARE USA Consolidated Statement of Activities

For the Years Ended June 30, 2021 and 2020

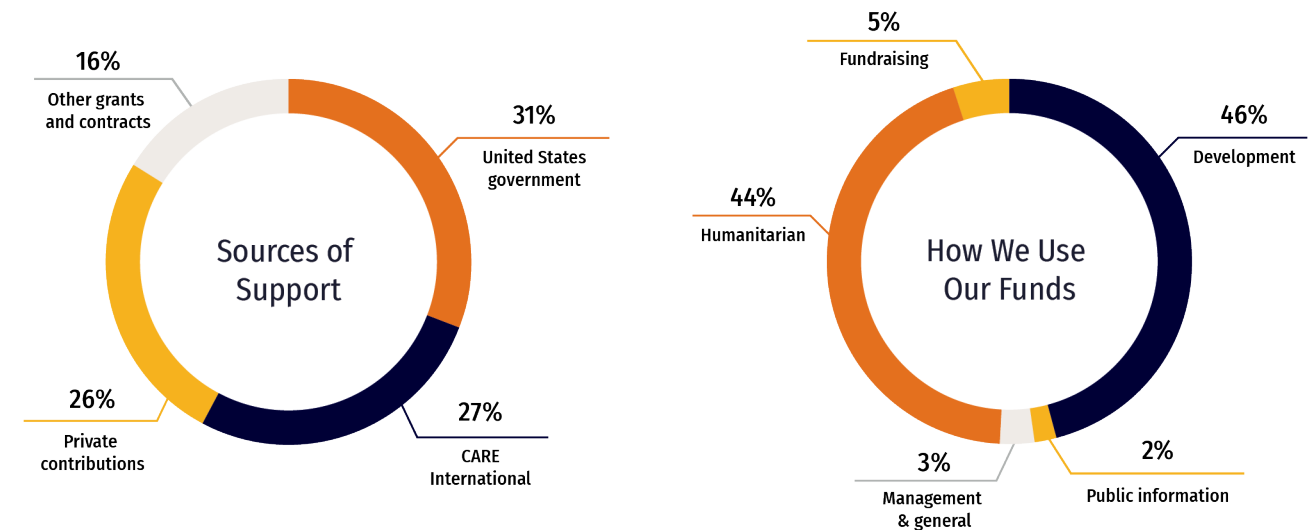
	Without Donor Restrictions	With Donor Restrictions	Total 2021	Total 2020
Support				
Contributions of financial assets				
Private contributions	\$ 72,768	\$ 106,892	\$ 179,660	\$ 104,994
United States government	204,096	-	204,096	172,299
CARE International	196,591	-	196,591	189,791
Other institutional donors	108,583	-	108,583	103,912
Contributions of nonfinancial assets				
Private contributions	-	11,994	11,994	13,379
United States government	20,354	-	20,354	25,678
CARE International	352	-	352	-
Other institutional donors	4,664	-	4,664	1,105
Other revenue	3,516	103	3,619	3,369
Satisfaction of restrictions	121,055	(121,055)	-	-
Total support	731,979	(2,066)	729,913	614,527
Expenses				
Program activities	658,572	-	658,572	608,130
Supporting activities	56,703	-	56,703	51,210
Total expenses	715,275	-	715,275	659,340
Investment income and other gains and losses	8,881	28,993	37,874	711
Total changes in net assets	25,585	26,927	52,512	(44,102)
Net assets, beginning of year	66,722	265,174	331,896	375,998
Net assets, end of year	\$ 92,307	\$ 292,101	\$ 384,408	\$ 331,896

Financials at a Glance

Program Work Overview



Selected Financial Information



VISION

We seek a world of hope, inclusion, and social justice, where poverty has been overcome and all people live with dignity and security.

MISSION

CARE works around the globe to save lives, defeat poverty, and achieve social justice.

FOCUS

We put women and girls in the center because we know that we cannot overcome poverty until all people have equal rights and opportunities.

VALUES

- TRANSFORMATION
- INTEGRITY
- DIVERSITY
- EXCELLENCE
- EQUALITY





THIS YEAR, JOIN US AS WE FACE GLOBAL CHALLENGES AND STAND ALONGSIDE OUR COMMUNITIES.

DONATE

Your gift today can help change the world of tomorrow.

Visit: care.org
Email: info@care.org
Call: 1-800-521-CARE (2273)
Mail: CARE Gift Center
P.O. Box 1870
Merrifield, VA
22116

Future Gifts
Help CARE fight poverty through a bequest. Contact Planned Giving at **1-800-752-6004** for information about including CARE in your estate planning.

ACTIVATE

Join the conversation. Mobilize your networks to create a community of CARE.

- @careorg
- @care
- carefans
- CARE

ADVOCATE

Speak up! Join CARE Action and raise your voice in the fight against extreme poverty. Call, meet, inform your elected leaders. careaction.org



JOIN US! care.org/careers care.org/get-involved



HEADQUARTERS & SOUTHEAST FIELD OFFICE

CARE USA

151 Ellis Street NE
Atlanta, GA 30303
T: 404-681-2552

CONSTITUENT SERVICES

1-800-422-7385
info@care.org

FIELD OFFICES

Boston

P.O. Box 390292
Cambridge, MA 02139

Chicago

P.O. Box 57569
Chicago, IL 60657

Los Angeles

3108 Glendale Boulevard, #534
Los Angeles, CA 90039

New York

370 Lexington Avenue
New York, NY 10006

San Francisco

465 California Street, Suite 475
San Francisco, CA 94104

Washington, D.C.

1100 17th Street NW, Suite 900
Washington, D.C. 20036

**Please send donations to
CARE's gift processing center
rather than field offices:**

CARE Gift Center
P.O. Box 1870
Merrifield, VA 22116



PHOTO CREDITS — Cover: Asafuzzaman Captain/CARE; Inside Front Cover: Karin Schermbrucker/CARE; Page 7: James Rodriguez/Makemende for CARE; Page 8: Lameck Luhanga/GGimages/CARE; Page 12/13: Lameck Luhanga/GGimages/CARE; Page 14: Erika Piñeros/CARE; Page 16: David Mutua/CARE; Page 18: Valerie Fernandez/CARE; Page 21: Asafuzzaman Captain/CARE; Page 22: Johanna-Maria Fritz/Agency Ostkreuz; Page 25: Ala kheir/CARE; Page 27: Phil Kabuje/CARE; Page 28/29: Phil Kabuje/CARE; Page 32/33: Douglas Diave/CARE; Page 34/35: Nofy Nandrianina Noelisoa Rajernerson/CARE

CARE is an Equal Opportunity Employer and Affirmative Action Employer (AA/M/F/D/V) dedicated to workplace diversity. CARE® and CARE Package® are registered marks of CARE. Copyright ©2022 by Cooperative for Assistance and Relief Everywhere, Inc. (CARE). All rights reserved. Unless otherwise indicated, all photos ©CARE.